

pressure limitation valve

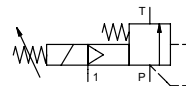
type HPB-S 50


3-HPB-S 50

valve type with pilot valve



control valve manual	externally controlled
pressure range	PN 5-64 bar
orifice	DN 50 mm
connection	thread
function	manual
	stepless
	pressure regulation



 Above stated body materials refer to the valve port connections that get in contact with the media only!

design	externally controlled with spring return
body materials	① ② ③ ④ steel, nickel plated ⑤ ⑥
valve seat	metal on metal
seal materials	FPM, PTFE

details needed for main valve

- orifice
- port
- pressure regulating range
- flow rate
- media
- media temperature
- ambient temperature

details needed for pneumatic actuation

- nominal voltage
- type of protection
- actuation pressure range min/max


general specifications	options
ports	HPB threads G 1 1/2 SAE connection DIN ISO 6162
function	stepless regulation
pressure regulation range	bar 5-64
Kv value	m³/h 48,0
media	emulsions - oils
abrasive media	
flow direction	P ⇌ T as marked
operating time	ms < 900
media temperature	°C 0 to +60
ambient temperature	°C 0 to +50
approvals	
mounting	mounting holes
weight	kg 11,9
additional equipment	security valve


electrical specifications**options**

nominal voltage	Un 24 V DC special voltage upon request
	Un 230 V 50 Hz AC special voltage upon request
power consumption	DC 4,8 W 2,5 W
	AC pick up 11,0 VA holding 8,5 VA
protection	IP 65 (P54) acc. DIN 40 050
energized duty rating	ED 100%
connection	plug acc. DIN EN 175301-803 form B
additional equipment	illuminated plug with varistor
optional	M12x1 connector acc. DESINA connector acc. VDMA
coil	3 positions x 90° / wire diameter 6-8 mm
max. temperature	media 60°C
	ambient 50°C
explosion proof	EEx m II T5 nominal voltage Un direct current 24 V 3,25 W
	power consumption alternating current 230 V 50 Hz 2,90 W

pneumatic specifications**options**

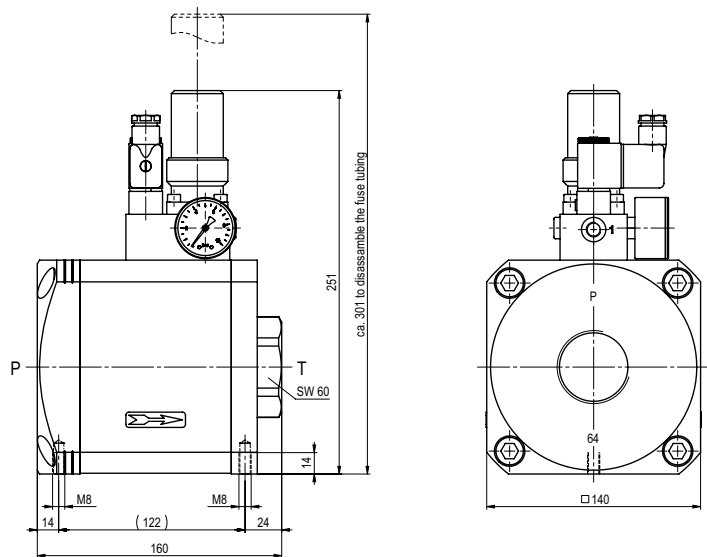
actuation pressure range	bar see actuation pressure-diagram
air consumption	DIN ISO 8573-1 grade of compressed air quality 5/4/3
control	preferably 3/2-way pilot valve during low pressure circulation mode
actuator ports	1 G 1/8

 The valves' technical design is based on media and application requirements. This can lead to deviations from the general specifications shown on the data sheet with regards to the design, sealing materials and characteristics.

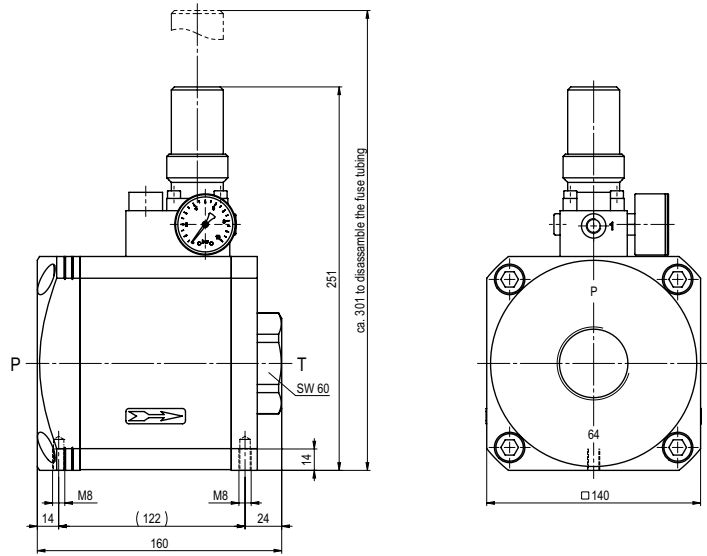
 If order or application specifications are incomplete or imprecise there exists a risk of an incorrect technical design of the valve for the required application. As a consequence, the physical and / or chemical properties of the materials or seals used, may not be suitable for the intended application.

■ specifications not highlighted are standard
 ■ specifications highlighted in grey are optional

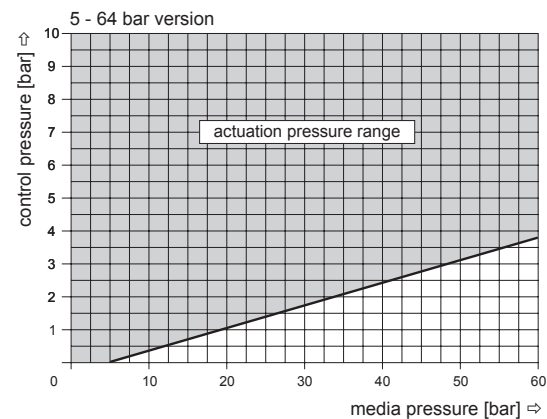
type **3-HPB-S 50**



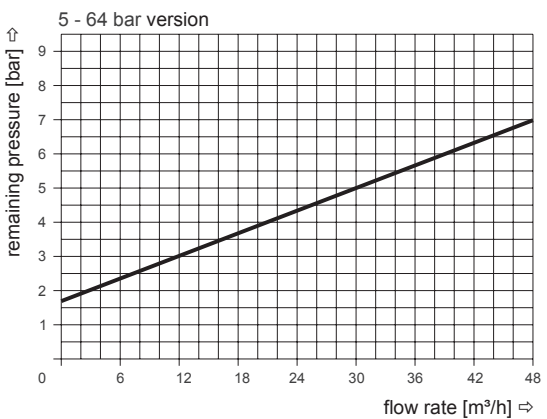
type **HPB-S 50**



actuation pressure-diagram



pressureless circulation mode



Sound creation during low pressure circulation mode and flow $Q=48 \text{ m}^3/\text{h}$: ca. 74 dbA