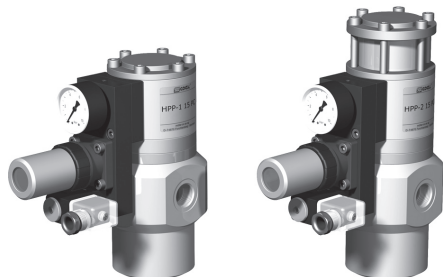


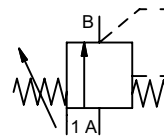
3-HPP-1 15 PC**3-HPP-2 15 PC**


valve type with pilot valve

type

pressure reduction valve**HPP-1 15 PC****HPP-2 15 PC**

control valve manual
pressure range PN 0-80 bar
orifice DN 15 mm
connection thread/cartridge
function manual
stepless
pressure regulation



 Above stated body materials refer to the valve port connections that get in contact with the media only!

design externally controlled with spring return
body materials ① aluminium ③
① brass ④
② ⑥ stainless steel
valve seat synthetic resin on metal / metal on metal
seal materials EPDM, PU, HNBR FPM

details needed for main valve

- orifice
- port
- pressure regulating range
- flow rate
- media
- media temperature
- ambient temperature

details needed for pneumatic actuation

- nominal voltage
- type of protection
- actuation pressure range min/max


ports	HPP-1	with valve body G 1/2 - G 3/4	without valve body
	HPP-2	with valve body G 1/2 - G 3/4	without valve body
function		stepless regulation	
pressure regulation range	bar	HPP-1 5-40	HPP-2 5-80
Kv value	m³/h	max. 6,0	
media		gaseous - liquid - highly viscous - contaminated	
abrasive media			version available
flow direction	A ⇌ B	as marked	
operating time	ms	< 200	
media temperature	°C	0 to +60	
ambient temperature	°C	0 to +50	
approvals			WAZ
mounting			mounting holes
weight	kg	HPP-1 2,7 HPP-2 3,0	HPP-1 3,8 HPP-2 4,1
additional equipment			


general specifications**options****electrical specifications****options**

nominal voltage	U _n	24 V DC	special voltage upon request
	U _n	230 V 50 Hz AC	special voltage upon request
power consumption	DC	4,8 W	2,5 W
	AC	pick up 11,0 VA holding 8,5 VA	
protection	IP 65 (P54)	acc. DIN 40 050	
energized duty rating	ED	100%	
connection		plug acc. DIN EN 175301-803 form B	
additional equipment		illuminated plug with varistor	
optional	M12x1	connector acc. DESINA	connector acc. VDMA
coil		3 positions x 90° / wire diameter 6-8 mm	
max. temperature	media	60°C	
	ambient	50°C	
explosion proof	EEx m II T5	nominal voltage U _n	direct current 24 V 3,25 W
		power consumption	alternating current 230 V 50 Hz 2,90 W

pneumatic specifications**options**

actuation pressure range	bar	see actuation pressure-diagram
air consumption		DIN ISO 8573-1 grade of compressed air quality 5/4/3
control		preferably 3/2-way pilot valve during low pressure circulation mode
actuator ports	1	G 1/8

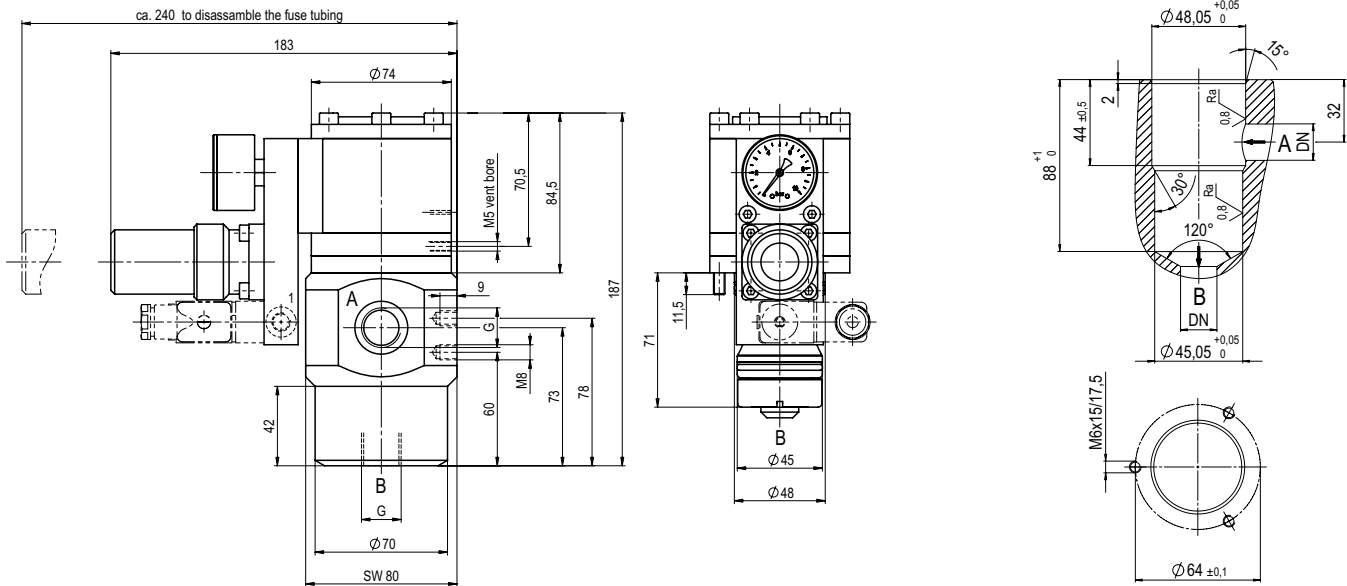
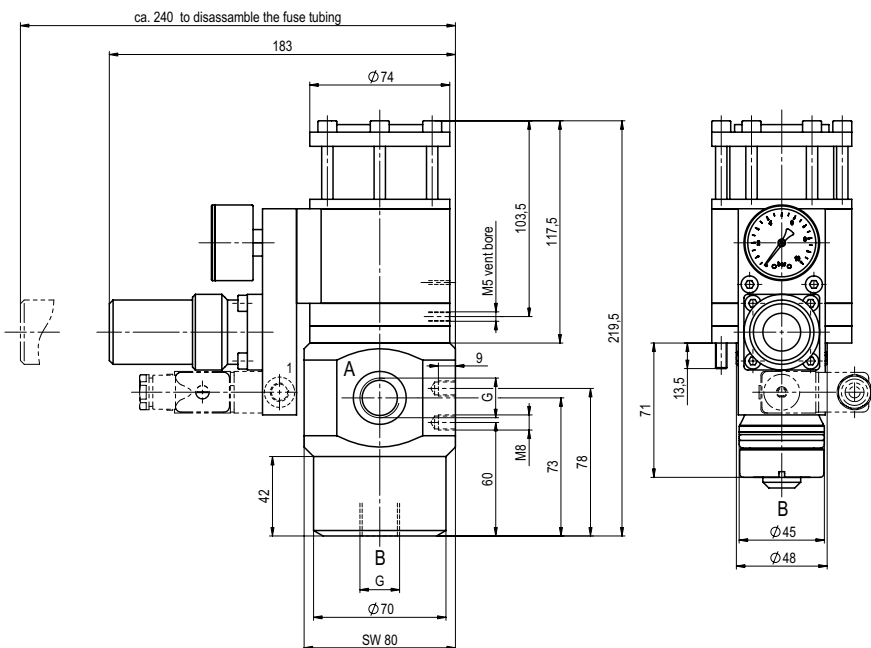
 The valves' technical design is based on media and application requirements. This can lead to deviations from the general specifications shown on the data sheet with regards to the design, sealing materials and characteristics.

 If order or application specifications are incomplete or imprecise there exists a risk of an incorrect technical design of the valve for the required application. As a consequence, the physical and / or chemical properties of the materials or seals used, may not be suitable for the intended application.

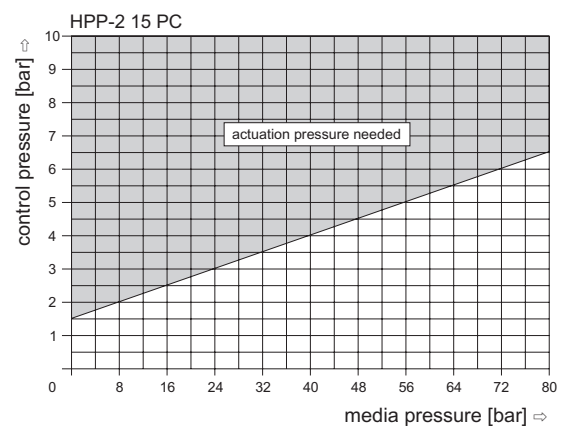
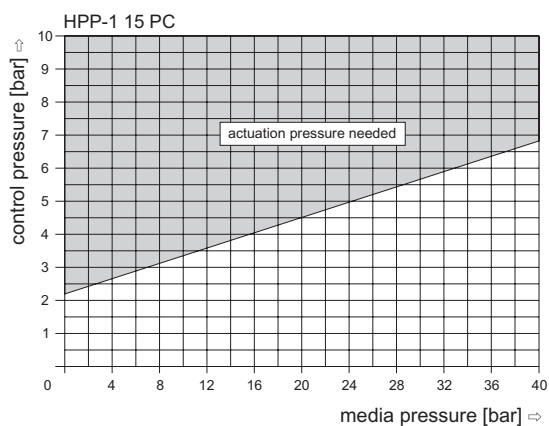
■ specifications not highlighted are standard
■ specifications highlighted in grey are optional

type **HPP-1 15 PC**

drilling design for cartridge

type **HPP-2 15 PC**

actuation pressure-diagram



The application-specific layout relating to temperature, pressure conditions, switching behavior, media and its consistency may restrict the range of use or necessitate relevant modifications to materials used and seal arrangements.