

pressure limitation valve

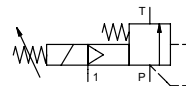
type HPB-S 32


3-HPB-S 32

valve type with pilot valve



control valve manual externally controlled
 pressure range PN 5-64 bar
 orifice DN 32 mm
 connection thread
 function manual
 stepless
 pressure regulation



 Above stated body materials refer to the valve port connections that get in contact with the media only!

design externally controlled with spring return
body materials ① ④
 ② steel, galvanized ⑤
 ③ ⑥
valve seat metal on metal
seal materials FPM, PTFE

details needed for main valve

- orifice
- port
- pressure regulating range
- flow rate
- media
- media temperature
- ambient temperature

details needed for pneumatic actuation

- nominal voltage
- type of protection
- actuation pressure range min/max


ports	HPB	threads G 1 1/2	options	SAE connection DIN ISO 6162
function		stepless regulation		
pressure regulation range	bar	5-64		
Kv value	m³/h	24,0		
media		liquid - highly viscous - contaminated		
abrasive media				
flow direction	P ⇌ T	as marked		
operating time	ms	< 900		
media temperature	°C	0 to +60		
ambient temperature	°C	0 to +50		
approvals				
mounting		mounting holes		
weight	kg	8,3		
additional equipment				security valve


electrical specifications**options**

nominal voltage	U _n	24 V	DC	special voltage upon request	
	U _n	230 V	50 Hz	AC	special voltage upon request
power consumption	DC	4,8 W	2,5 W		
	AC	pick up 11,0 VA holding 8,5 VA			
protection	IP 65 (P54)	acc. DIN 40 050			
	ED	100%			
energized duty rating					
connection	plug acc. DIN EN 175301-803 form B				
additional equipment	illuminated plug with varistor				
optional	M12x1	connector acc. DESINA		connector acc. VDMA	
	coil	3 positions x 90° / wire diameter 6-8 mm			
max. temperature	media	60°C			
	ambient	50°C			
explosion proof	EEx m II T5	nominal voltage	U _n	direct current	24 V
		power consumption		alternating current	230 V 50 Hz
					3,25 W
					2,90 W

pneumatic specifications**options**

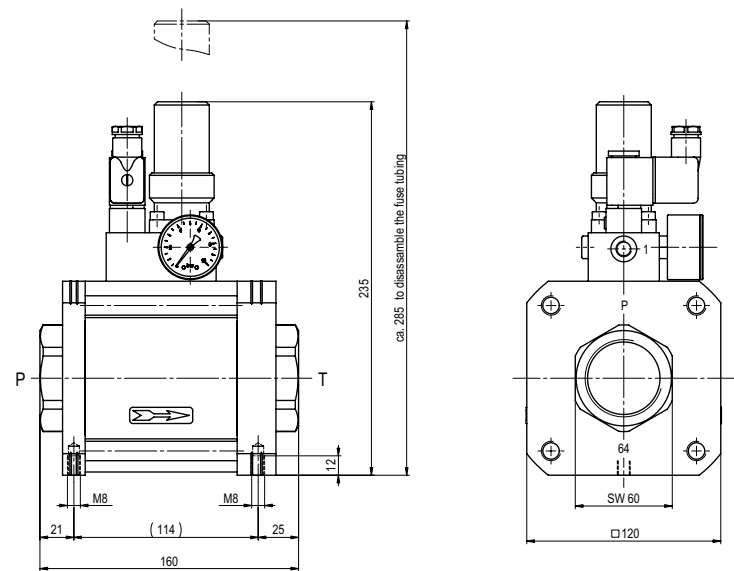
actuation pressure range	bar	see actuation pressure-diagram
air consumption		DIN ISO 8573-1 grade of compressed air quality 5/4/3
control		preferably 3/2-way pilot valve during low pressure circulation mode
actuator ports	1	G 1/8

 The valves' technical design is based on media and application requirements. This can lead to deviations from the general specifications shown on the data sheet with regards to the design, sealing materials and characteristics.

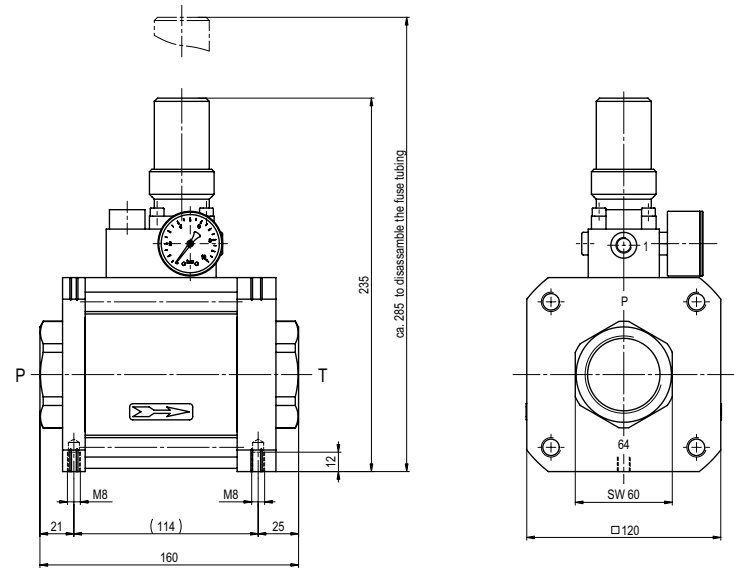
 If order or application specifications are incomplete or imprecise there exists a risk of an incorrect technical design of the valve for the required application. As a consequence, the physical and / or chemical properties of the materials or seals used, may not be suitable for the intended application.

■ specifications not highlighted are standard
 ■ specifications highlighted in grey are optional

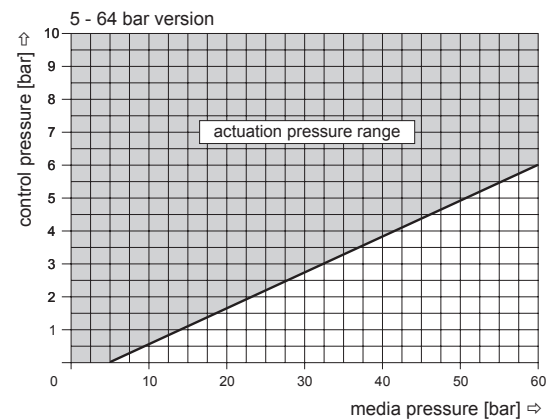
type **3-HPB-S 32**



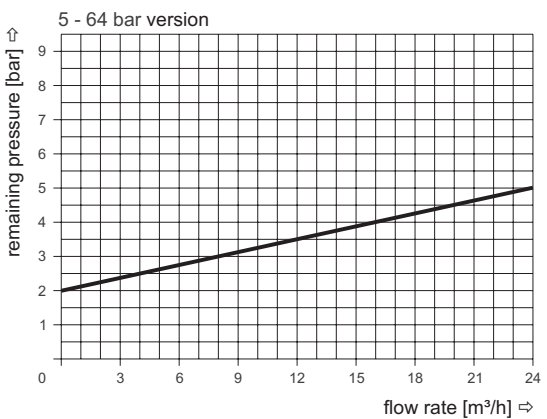
type **HPB-S 32**



actuation pressure-diagram



pressureless circulation mode



Sound creation during low pressure circulation mode and flow $Q=24\text{ m}^3/\text{h}$: ca. 70 dbA