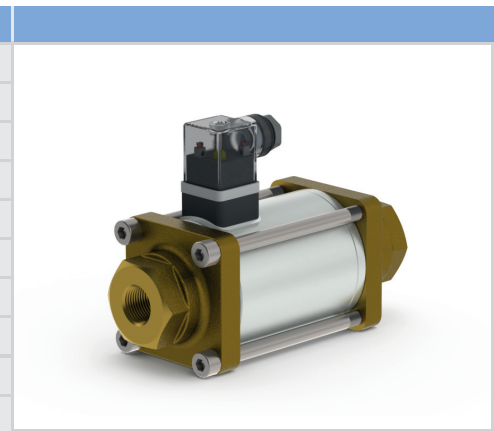


nominal specifications	
2/2-way coaxial valve	direct acting
pressure range	0-600 psi
connection	thread
function	NC - normally closed NO - normally open
design	pressure balanced, with spring return
body materials parts in contact with media	brass, stainless steel
seal materials seat / dynamic / static	FPM / PTFE / FPM customer to verify seal / seat compatibility with media
media	gaseous - liquid - highly viscous - gelatinous - contaminated
electrical connection	PG 9, plug acc. DIN EN 175301-803 form A, LED



technical data	CXD 10	CXD 15	CXD 20	CXD 25
orifice	DN 10	DN 15	DN 20	DN 25
threads	FNPT 3/8	FNPT 1/2	FNPT 3/4	FNPT 1
Cv A ⇌ B	2.5	6.0	8.6	14.0
media temperature	-4 °F to +212 °F	-4 °F to +212 °F	-4 °F to +212 °F	-4 °F to +212 °F
ambient temperature	-4 °F to +140 °F	-4 °F to +140 °F	-4 °F to +140 °F	-4 °F to +140 °F
switching time opening / closing	45 ms / 70 ms	60 ms / 130 ms	105 ms / 150 ms	150 ms / 190 ms
vacuum leak rate	< 10 ⁻⁴ mbar•l•s ⁻¹	< 10 ⁻⁴ mbar•l•s ⁻¹	< 10 ⁻⁴ mbar•l•s ⁻¹	< 10 ⁻⁴ mbar•l•s ⁻¹
flow direction	A ⇌ B B ⇌ A (Δp 180 psi max.)	A ⇌ B B ⇌ A (Δp 180 psi max.)	A ⇌ B B ⇌ A (Δp 180 psi max.)	A ⇌ B B ⇌ A (Δp 180 psi max.)
nominal voltage	DC 24 V AC 110 V	DC 24 V AC 110 V	DC 24 V AC 110 V	DC 24 V AC 110 V
current consumption	DC 1.45 A AC 0.36 A	DC 2.1 A AC 0.41 A	DC 2.2 A AC 0.56 A	DC 2.5 A AC 0.62 A
insulating rating	H	H	H	H
protection	IP 65	IP 65	IP 65	IP 65
energized duty rating	ED 100%	ED 100%	ED 100%	ED 100%
length L1 / L2	5.71 in / 1.97 in	6.81 in / 2.76 in	7.60 in / 3.15 in	8.35 in / 3.54 in
length L3 / L4	- / -	- / -	- / -	- / -
weight	3.75 lb	8.16 lb	11.90 lb	15.65 lb

accessories optional	order-codes			
mounting brackets stainless steel	1 2 3 5 5 5	1 2 3 5 5 6	1 2 3 5 5 7	1 2 3 5 5 8

drawings	circuit symbols	valve order-code
	<p>function: NC closed when not energized</p> <p>function: NO open when not energized</p>	<p>brass = 1 stainless steel = 2</p>