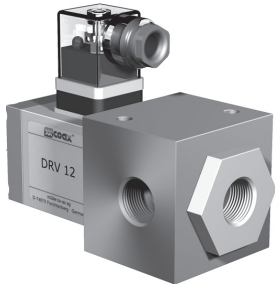
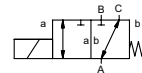


# lateral valve

## type DRV 12



**3/2 way valve** direct acting  
**pressure range** low vacuum  
**orifice** DN 12 mm  
**connection** thread  
**function** valve normally closed (A ► B)  
**symbol** **NC**



**⚠** Above stated body materials refer to the valve port connections that get in contact with the media only!

**design** pressure balanced, with spring return, intersecting switch-over  
**body materials** **Ⓞ** aluminium

**valve seat** synthetic resin on metal  
**seal materials** NBR, CR

**details needed**

- orifice
- port
- function NC
- operating pressure
- inlet pressure at A, B or C
- flow rate
- media
- media temperature
- ambient temperature
- nominal voltage

**general specifications**

**options**

<b>ports</b>	DRV	threads G 1/2
<b>function</b>		NC
<b>pressure range</b>	bar	vacuum max. 98% A ⇌ B Δp max.1 / B ⇌ A Δp max.1 / C ⇌ A Δp max.1
<b>Kv value</b>	m³/h	2,7 / volume flow 11,0
<b>vacuum</b>	leak rate	< 10 <sup>-6</sup> mbar•l•s <sup>-1</sup>
<b>pressure-vacuum</b>	P <sub>1</sub> ⇌ P <sub>2</sub>	pressure side max. 1bar, vacuum side leak rate <10 <sup>-6</sup> mbar•l•s <sup>-1</sup>
<b>back pressure</b>	P <sub>2</sub> > P <sub>1</sub>	
<b>media</b>		gaseous
<b>abrasive media</b>		
<b>damping</b>	opening	
	closing	
<b>flow direction</b>		see pressure range
<b>switching cycles</b>	1/min	300
<b>switching time</b>	ms	opening 40 closing 25
<b>media temperature</b>	°C	DC: -10 to +80 AC: -10 to +80
<b>ambient temperature</b>	°C	DC: -10 to +80 AC: -10 to +80
<b>limit switches</b>		
<b>manual override</b>		
<b>approvals</b>		
<b>mounting</b>		mounting holes
<b>weight</b>	kg	1,0
<b>additional equipment</b>		upon request

**electrical specifications**

**options**

<b>nominal voltage</b>	U <sub>n</sub>	24 V DC	special voltage upon request
	U <sub>n</sub>	230 V 40-60 Hz AC	special voltage upon request
<b>actuation</b>	DC	direct-current magnet	
	AC	direct-current magnet with integrated rectifier	
<b>insulation rating</b>	H	180°C	
<b>protection</b>	IP65		
<b>energized duty rating</b>	ED	100%	
<b>connection</b>		plug acc. DIN EN 175301-803 form A, 4 positions x 90° / wire diameter 6-8 mm	
<b>optional additional equipment</b>		illuminated plug with varistor	
<b>current consumption</b>	N-coil	24 V DC 1,33 A 230 V 40-60 Hz AC 0,17 A	
	H-coil		
<b>explosion proof</b>			
<b>limit switches</b>			

**⚠** The valves' technical design is based on media and application requirements. This can lead to deviations from the general specifications shown on the data sheet with regards to the design, sealing materials and characteristics.

**⚠** If order or application specifications are incomplete or imprecise there exists a risk of an incorrect technical design of the valve for the required application. As a consequence, the physical and / or chemical properties of the materials or seals used, may not be suitable for the intended application.

■ specifications not highlighted are standard  
 ■ specifications highlighted in grey are optional

# type DRV 12

function: **NC**  
closed when not energized (A ► B)

