

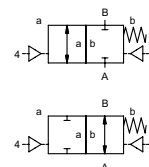
# lateral valve type PCD-H 10

## 5-PCD-H 10

valve type with pilot valve



**2/2 way valve** externally controlled  
**pressure range** PN 0-500 bar  
**orifice** DN 10 mm  
**connection** thread  
**function** valve normally closed symbol **NC**  
 valve normally open symbol **NO**



**⚠** Above stated body materials refer to the valve port connections that get in contact with the media only!

**design** pressure balanced, with spring return  
**body materials** ① brass ②  
 ③ ⑤  
 ④ ⑥ stainless steel  
**valve seat** synthetic resin on metal  
**seal materials** NBR PTFE, FPM, CR, EPDM

**details needed for main valve**

- orifice
- port
- function NC/NO
- operating pressure/Δp
- flow rate
- media
- media temperature
- ambient temperature
- type of actuation

**details needed for pneumatic actuation**

- nominal voltage
- type of protection
- actuation pressure range min/max
- low wattage coil, actuation pressure range 4-7 bar
- pilot valve type

**⚠** The valves' technical design is based on media and application requirements. This can lead to deviations from the general specifications shown on the data sheet with regards to the design, sealing materials and characteristics.

**⚠** If order or application specifications are incomplete or imprecise there exists a risk of an incorrect technical design of the valve for the required application. As a consequence, the physical and / or chemical properties of the materials or seals used, may not be suitable for the intended application.

■ specifications not highlighted are standard  
 specifications highlighted in grey are optional

**general specifications**

**options**

ports	PCD-H	threads G 3/8	
function	NC		NO
pressure range	bar	0-500	
Kv value	m³/h	1,5	
vacuum	leak rate		
pressure-vacuum	P1 ⇌ P2		
back pressure	P2 > P1		
media		gaseous - liquid	
abrasive media			
damping	opening		
	closing		
flow direction	A ⇌ B	see pressure range	
switching cycles	1/min	130	
switching time	ms	opening 30-3000 closing 30-3000	
media temperature	°C	direct mounted pilot valve 60	remote mounted pilot valve outside temperature range of media max.150°C
ambient temperature	°C	direct mounted pilot valve 50	
flush ports			
leak ports			
limit switches			inductive
manual override			
approvals			
mounting			
weight	kg	9,0	
additional equipment			

**electrical specifications**

**options**

nominal voltage	Un	DC 24V	special voltage upon request
	Un	AC 230V 50 Hz	special voltage upon request
power consumption	DC	4,8 W	2,5 W
	AC	pick up 11,0 VA holding 8,5 VA	
protection	IP 65 (P54)	acc. DIN 40 050	
energized duty rating	ED	100%	
connection		plug acc. DIN EN 175301-803 form B, 4 positions x 90° / wire diameter 6-8 mm	
additional equipment		illuminated plug with varistor	
optional		connector acc. DESINA	connector acc. VDMA
max. temperature	media	60°C	
	ambient	50°C	
explosion proof	EEx m II T5	nominal voltage Un	direct current 24 V 3,25 W
		power consumption	alternating current 230 V 50 Hz 2,90 W

**pneumatic specifications**

**options**

actuation pressure range	bar	4-10	
air consumption	cm³/stroke	7	
cycle speed	main valve speed	variable by throttles on pilot valve	
control		preferably 5/2-way pilot valve	
actuator ports	2/4	G 1/8	

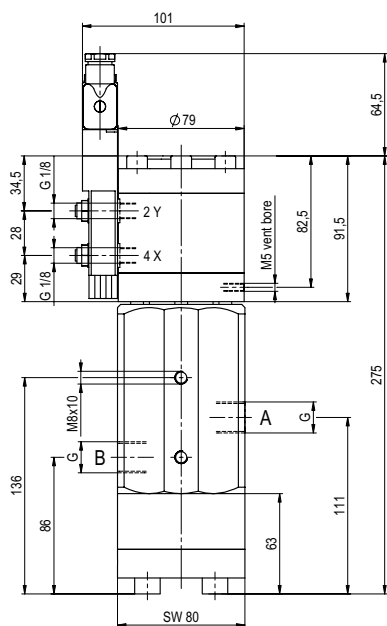
**hydraulic specifications**

**options**

actuation pressure range			
by media			
control			
actuator ports			

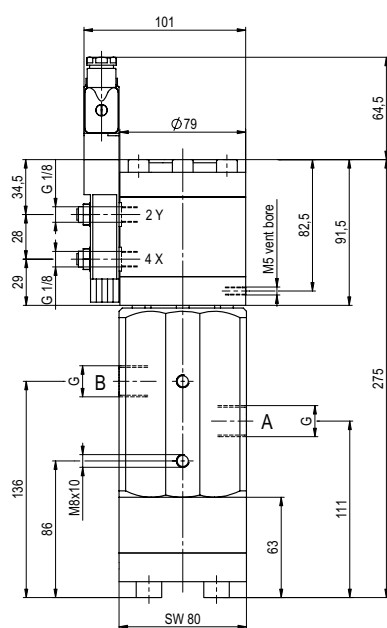
# type PCD-H 10

function: **NC**  
closed when not energized

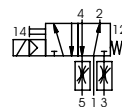


# type PCD-H 10

function: **NO**  
open when not energized



## pneumatic actuation (separately)



5/2-way-pilot valve  
flow rate 350 l/min  
pressure range 3-10 bar G 1/8

The application-specific layout relating to temperature, pressure conditions, switching behavior, media and its consistency may restrict the range of use or necessitate relevant modifications to materials used and seal arrangements.

Rights reserved to make technical alterations • Not responsible for printing errors • Detailed drawings can be obtained upon request