

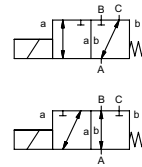
# coaxial valve

## type FK 80 DR



**3/2 way valve** direct acting  
**pressure range** PN 0-16 bar  
**orifice** DN 80 mm  
**connection** flange  
**function** valve normally closed (A ► B)  
 symbol **NC**

valve normally open (A ► B)  
 symbol **NO**



**⚠** Above stated body materials refer to the valve port connections that get in contact with the media only!

**design** pressure balanced, with spring return, intersecting switch-over

**body materials** ① aluminium ② steel, galvanized  
 ③ ⑤  
 ④ steel, nickel plated ⑥ stainless steel

**valve seat** synthetic resin on metal

**seal materials** NBR PTFE, FPM, EPDM

**details needed**

- orifice
- port
- function NC/NO
- operating pressure
- inlet pressure at A, B or C
- flow rate
- media
- media temperature
- ambient temperature
- nominal voltage

	general specifications	options
ports	FK flanges PN 16	special flanges
function	NC	NO
pressure range	0-16 bar A ⇒ B max.16 / B ⇒ A max. 5 / A ⇒ C max.16 / C ⇒ A max.16	
Kv value	m³/h 55,0	
vacuum	leak rate	< 10 <sup>-4</sup> mbar·l·s <sup>-1</sup>
pressure-vacuum	P <sub>1</sub> ⇄ P <sub>2</sub>	upon request
back pressure	P <sub>2</sub> > P <sub>1</sub> see pressure range	
media	gaseous - liquid - highly viscous - gelatinous - contaminated	
abrasive media		upon request
damping	opening closing	
flow direction	see pressure range	
switching cycles	1/min 20	
switching time	ms opening 600 closing 800	
media temperature	°C DC: -20 to +80 AC: -20 to +80	
ambient temperature	°C DC: -20 to +80 AC: -20 to +80	
limit switches		inductive
manual override		
approvals		LR/GL/WAZ
mounting		
weight	kg FK 48,8	
additional equipment		upon request

**⚠** The valves' technical design is based on media and application requirements. This can lead to deviations from the general specifications shown on the data sheet with regards to the design, sealing materials and characteristics.

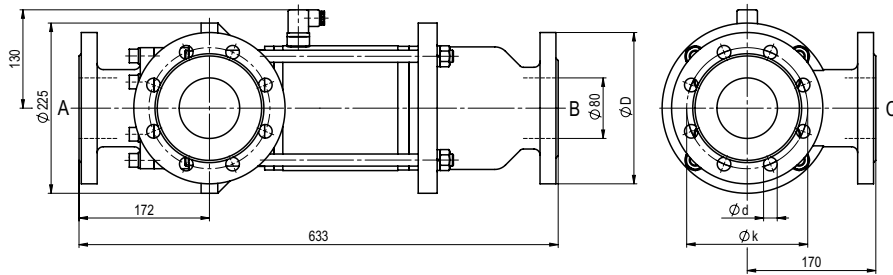
**⚠** If order or application specifications are incomplete or imprecise there exists a risk of an incorrect technical design of the valve for the required application. As a consequence, the physical and / or chemical properties of the materials or seals used, may not be suitable for the intended application.

	electrical specifications	options
nominal voltage	U <sub>n</sub> 24 V DC U <sub>n</sub> 230 V 40-60 Hz AC	special voltage upon request
actuation	DC direct-current magnet AC direct-current magnet with integrated rectifier	special voltage upon request
insulation rating	H 180°C	
protection	IP65	
energized duty rating	ED 100%	
connection	plug acc. DIN EN 175301-803 form A, 4 positions x 90° / wire diameter 6-8 mm	terminal box M16x1,5
optional additional equipment	illuminated plug with varistor	
current consumption	N-coil 24 V DC 4,40 A 230 V 40-60 Hz AC 0,65 A H-coil	230 V 40-60 Hz AC 0,79 A
explosion proof		
limit switches	inductive (I) inductive (B)	normally open-PNP normally open-PNP

■ specifications not highlighted are standard  
 ■ specifications highlighted in grey are optional

# type FK 80 DR

function: **NC**  
closed when not energized (A ► B)



flanges PN	DIN	øD	øk	ød
16	2633	200	160	18

# type FK 80 DR

function: **NO**  
open when not energized (A ► B)

