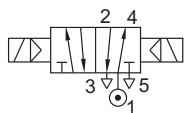
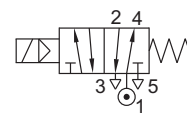


## 5/2, 3/2 CONVERTIBLE SPOOL TYPE, NAMUR SINGLE/ DOUBLE SOLENOID VALVE

TYPE	PRESSURE
VAD214NC	2 - 10 bar



TYPE	PRESSURE
VAD213NC	3.5 - 10 bar



### FEATURES

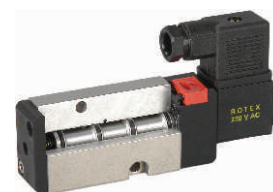
- High flow NW 5.3, kv=10 lpm@1bar
- Avoid water/ rain splashing on the solenoid
- Best suited for indoor application



Match Slot 4 for 5/2



Match Slot 2 for 3/2



### WETTED PARTS

Code	※
Body	Anodized Aluminium
Internals	Aluminium, Brass
Guide Assembly	Brass
Shadow-Ring	Copper
Plunger, Insert	SS 430
Spring	SS 302
Fasteners	SS 304
Seat, Seals	NBR

### AMBIENT AND FLUID TEMPERATURE

-10 °C to 60 °C

### MEDIA

Air, Inert Gases

### APPLICATION

Operation of double/ single acting actuator

### PORT CONNECTION

INLET	OUTLET	OUTLET	EXHAUST	EXHAUST	PILOT EXHAUST
1	2	4	3	5	6

Contact Rotex for

- Any other ambient, fluid temperature, media and application



Recommended for indoor application.  
Due to PTFE sealing valve may have small leakage across the port.

### SPARES

(Refer page 25 for ordering code)

SPARE KIT	CODE
Seal Kit : Oring Set and Plunger Assembly	98
Repair Kit : Oring Set, Plunger Assembly, Fastener, Springs, Manual Override	99
Solenoid Kit : Solenoid, Gasket and Nut	34

### APPROVAL

(★ applied for)

Approval	Nema 4X	IP67	Ex d IIC T4 or T5 or T6 IP66	Ex ia IIC T6 IP67	DGMS	CCOE
		✓				
		✓				

## 5/2, 3/2 CONVERTIBLE SPOOL TYPE, NAMUR SINGLE/ DOUBLE SOLENOID VALVE

### SPECIFICATION

PORT CONNECTION			PRE-SSURE bar		ORIFICE (mm)	FLOW FACTOR kv (LPM OF WATER @ 1 bar ΔP)	VALVE TYPE	PILOT PRESSURE	BODY MATERIAL AND INTERNALS				SEALS				MANUAL OVERRIDE		SOLENOID ENCLOSURE		OUTLET PORT	POWER VA		CONSTRUCTION REFERENCE NUMBER
SIZE	BSP(F)	NPT(F)	MINIMUM	MAXIMUM					ALUMINIUM	ALUMINIUM + SS	BRASS (STD. PORT NPT)	SS 316/ CF8M (STD. PORT NPT)	NBR	Viton	EPDM	PTFE	NIL	STAY/UT CUM MOMENTARY	FLYING LEAD	WEATHER PROOF		EXPLOSION PROOF	SOLENOID SIZE	
5/2, 3/2 CONVERTIBLE SINGLE SOLENOID																								
1/4"	2G	2R	3.5	10	5	10	VAD213NC	*					*						8	2	12	6	5	N20
5/2, 3/2 CONVERTIBLE DOUBLE SOLENOID																								
1/4"	2G	2R	2	10	5	10	VAD214NC	*					*						8	2	12	6	5	N20

\* = Do not specify when opted for

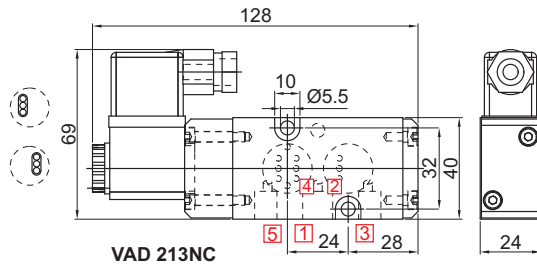
### ORDERING CODE, EXAMPLE VALVE + SOLENOID

TYPE - ORIFICE - PORT CONNECTION - BODY AND INTERNALS - MANUAL OVERRIDE - SEAL + VOLTAGE - CURRENT - SOLENOID ENCLOSURE - INSULATION  
 e.g. VAD213NC+24V DC

### DIMENSIONS

All Dimensions are in mm

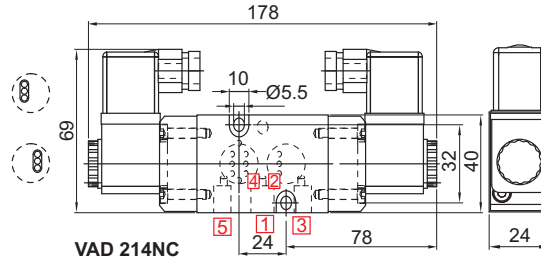
#### CONSTRUCTION REFERENCE N19



VAD 213NC

PLUG IN SOLENOID TYPE 22

#### CONSTRUCTION REFERENCE N20



VAD 214NC

PLUG IN SOLENOID TYPE 22